



Project Open Hand
meals with love

2024

ANNUAL REPORT

LETTER FROM THE CEO

Dear Friend,

Project Open Hand's 39th year showed just how important our unwavering commitment to the needs of our Bay Area neighbors is to our community. In a year when we served more people than ever – a 55% increase over the previous year – we were also honored as a California Nonprofit of the Year and voted “Best LGBTQ Nonprofit in the Bay” by the *Bay Area Reporter*.



In fiscal year 2024, more than 14,500 people – living with complex illnesses, battling the impacts of aging, and facing a wide range of social disparities – relied on our services.

Graham's story, featured on page seven in this report, illustrates the profound impact of our nutrition services. After struggling to cook for himself following stomach surgery in 2023, Graham turned to our Wellness Program. “Project Open Hand has been a real blessing for me,” he says. “I feel very thankful and lucky to be able to receive [your meals]. I'd be real nervous if I didn't have them.”

This year also marked a milestone in how we share our impact.

We launched the inaugural issue of *trEATment Magazine*, a first-of-its-kind publication that explores the effects of medically tailored nutrition and community-based “Food is Medicine” interventions, like the ones we provide at Project Open Hand, through peer-reviewed research.

As the world changes, the need for our services continues to grow. Your support—as a donor, volunteer, or advocate—is more vital than ever.

Thanks to you, we're able to deliver nutritious meals to Bay Area residents facing health challenges and help them lead healthier lives. We're grateful to have you with us on this journey.

Paul Hepfer
Chief Executive Officer
Project Open Hand

HIGHLIGHTS OF THE YEAR



HONORED AS A CALIFORNIA NONPROFIT OF THE YEAR

Project Open Hand was named a 2024 California Nonprofit of the Year by State Senator Scott Wiener. At a June ceremony in Sacramento, we were recognized for our impact across the Bay.



LAUNCHED A UNIFIED NUTRITION & CULINARY SERVICES DEPARTMENT

In 2024, Project Open Hand restructured its Nutrition Services and Kitchen Operations into a single, department—Nutrition & Culinary Services—under the leadership of our first Chief Nutrition Officer, Katie Jackson, M.S., R.D. This strategic shift broke down silos, aligned priorities, and enhanced collaboration across our teams. With 16 years of experience, Katie now leads efforts to improve the quality of our meals.



INCREASED PLANT-BASED OPTIONS FOR BETTER SUSTAINABILITY AND HEALTH

We reduced our greenhouse gas emissions by 0.35 tons through the expansion of our plant-based and vegan meals offerings. (Plant-based is defined as <1.5 oz of animal product per meal.) By including three plant-based meals per week in our Vegetarian diet plan, we're burning 383 fewer pounds of coal. In addition, these new, plant-based diets are a powerful tool for our team, supporting both better health and using fewer resources.



PUBLISHED THE FIRST EDITION OF *trEATment Magazine*

We launched *trEATment Magazine*, a publication dedicated to the Food is Medicine movement, in February of 2024. In partnership with Ceres Community Project, the magazine explores the role of medically tailored meals in managing chronic illnesses. Healthcare professionals, policymakers, and advocates across the country have read the inaugural copy – and we are excited to publish more in the years ahead!

RECOGNIZED FOR OUR SERVICE AND PRIDE

Project Open Hand was honored to be recognized twice for our deep commitment to the LGBTQ+ community. We were voted Best LGBTQ Nonprofit by readers of the *Bay Area Reporter*, a reflection of the trust and appreciation from those we serve. We also received the Best Community Group Award at San Francisco Pride March, selected by parade judges for our spirit, service, and standout presence. These honors celebrated both our legacy and our ongoing work to nourish and uplift our community with love.



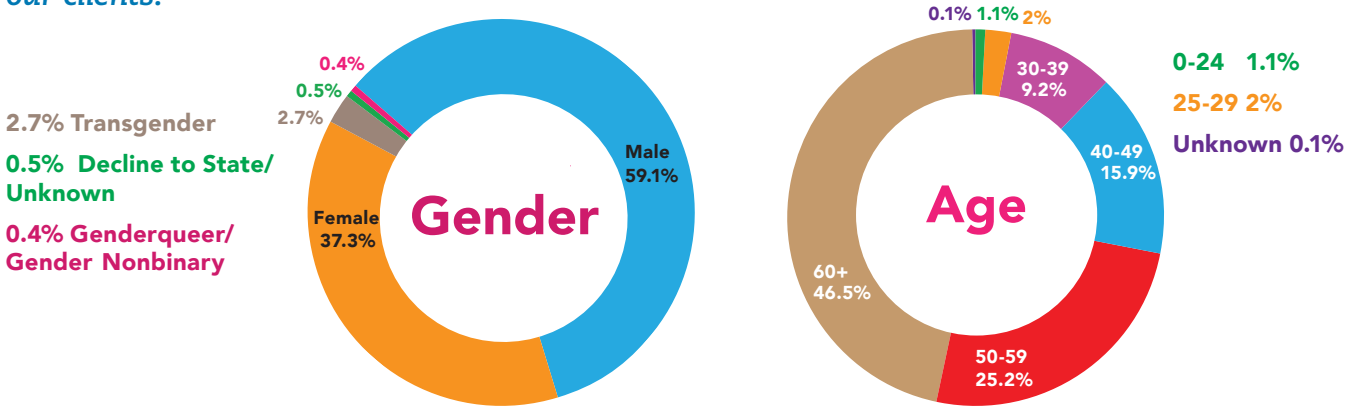
INTRODUCED THE JON BORSET AWARD FOR SERVICE

To honor the extraordinary legacy of the late, longtime Project Open Hand volunteer, we created the Jon Borset Award for Service. Introduced at our Hand to Hand gala, the award recognizes individuals who embody Jon's spirit of selfless service and unwavering dedication to our mission. The inaugural recipient, Lisa Erdos, has volunteered with Project Open Hand for over 30 years, beginning in 1993 after the loss of a close friend to AIDS. Lisa's compassion and commitment reflect the very heart of our work—and the enduring impact of volunteers like Jon.

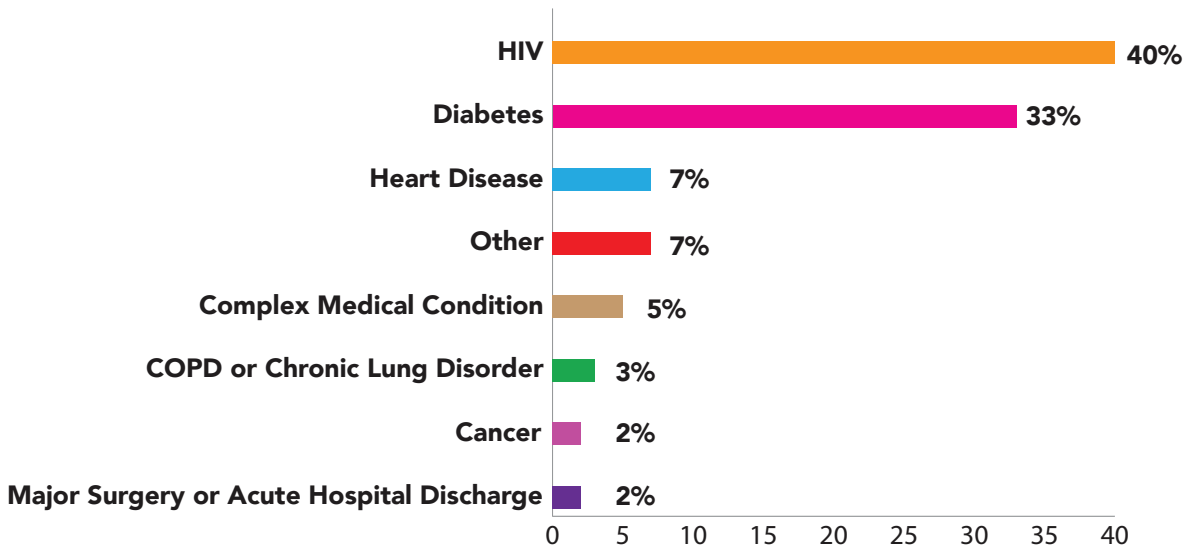


WELLNESS PROGRAM

The Wellness Program offers medically tailored nutrition to support people living with a variety of critical health conditions. Clients are referred by a medical provider and receive nutritious meals, fresh groceries, as well as nutrition assessment, counseling, and education from our team of Registered Dietitians. *This year, our Wellness Program served nearly 322,000 meals and over 56,000 bags of groceries to our clients.*



DIAGNOSES*



*Note: This chart lists primary conditions only; roughly 35% of Project Open Hand clients present with two or more chronic conditions.



717,310

medically tailored meals
(including groceries)



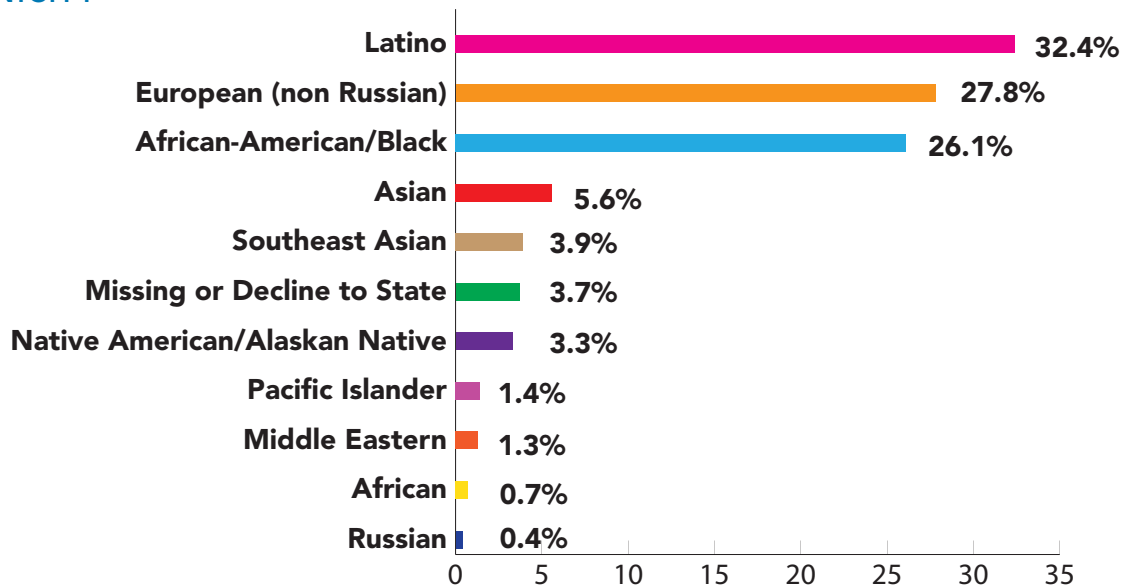
3,865

clients served (including
154 military veterans)

1,910

Nutrition Assessments with
Registered Dietitians

ETHNICITY*



**Note: Ethnicities reflected may add up to more than 100% because of multi-racial respondents.*

CLIENT STORIES

A Real Blessing

Graham remembers Project Open Hand from the early days. But it wasn't until years later that he'd find our organization again, this time as a client.

Graham came to San Francisco in the mid-1980s, after being kicked out of his home at age sixteen for being gay.

"I come from a middle-class family from a very conservative state," he says. "Being gay wasn't looked upon too well. So, at age sixteen I was asked to leave home. I hadn't finished high school or anything, and I had to do a lot of things just to survive."

He found community and comfort at Most Holy Redeemer, a Catholic church in the Castro, and eventually converted to Catholicism. Graham started a part-time job at the church during the height of the AIDS epidemic and witnessed the community's support, including from Ruth Brinker, founder of Project Open Hand.

Inspired by the support he received, Graham returned to school, earned his GED, and later a bachelor's degree in social work. He became a counselor at a correctional facility, helping people in similar predicaments to the one he had experienced.

After a major car accident left him on disability, Graham relied on support from



his network and nonprofits, renting a room in a Single Residency Occupancy (SRO). Later, when he was unable to cook for himself after a stomach surgery in 2023, a social worker suggested Project Open Hand. Graham, who has Chronic Obstructive Pulmonary Disease, now receives nutritious frozen meals each week.

"San Francisco had gotten so expensive to live in," says Graham, "Project Open Hand has been a real blessing for me."

The meals, he says, are very nutritious, and he enjoys them: "I feel satisfied with Project Open Hand meals – and I feel very thankful and lucky to be able to receive them. I know that if I wasn't using your services, I wouldn't be getting well-balanced meals that support my health. I'd be real nervous if I didn't have them."

A Fresh Start

Every week, Vivian shares a meal and lively conversation with friends at the Downtown Senior Center, one of twelve Community Nutrition Program (CNP) sites supported by Project Open Hand. These sites provide warm, nutritious meals to hundreds of community members throughout San Francisco. In fiscal year 2024, Project Open Hand provided more than 360,000 meals at these sites.

For Vivian, the Downtown Senior Center is vital.

“I come here for the community,” she says. “Being here helps me stay active, both physically and mentally.”

After a stretch of unemployment, Vivian struggled to regain her footing. Seeking support, she turned to the meal program at the Center and discovered much more than just a healthy meal.

“This place helped me focus on the present instead of dwelling on the past or worrying about the future,” she explains. “Coming here has given me hope and a renewed sense of purpose. Programs like this are so important for people like me who need a place to feel supported and cared for.”

Before joining the program, Vivian’s diet often consisted of quick, unhealthy options like fast food. But the wholesome, balanced



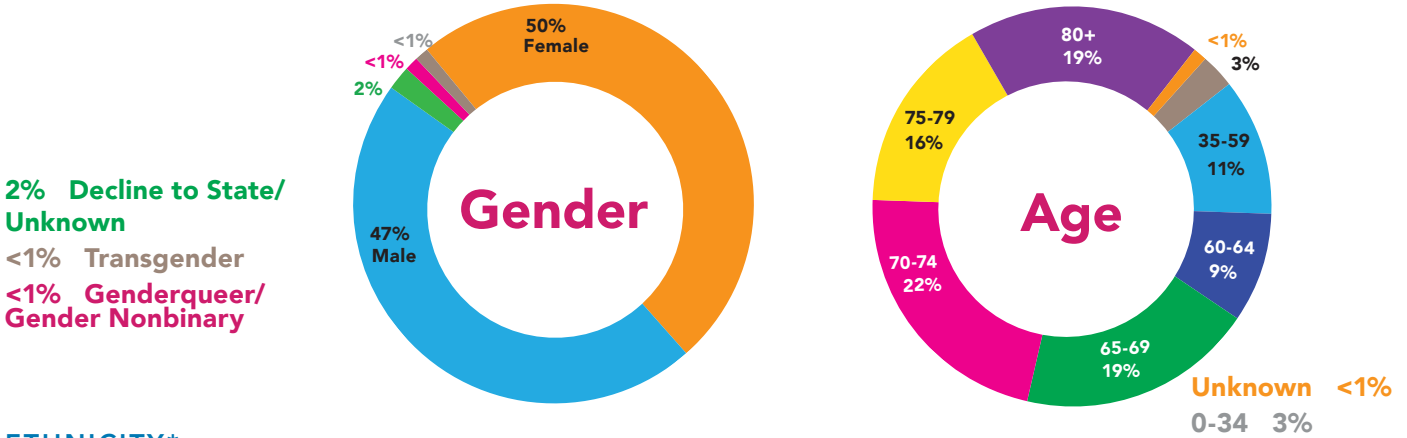
meals provided by Project Open Hand inspired her to rethink her relationship with food. Now, she is mindful of her choices, using less sugar and salt in her cooking and focusing on meals that support her overall health.

Vivian’s cholesterol has dropped by 100 points, and her blood pressure and oxygen levels are now back to normal. Even her doctor was impressed by her transformation, praising the impact of her improved diet and expressing curiosity about the meals she enjoys at the Center.

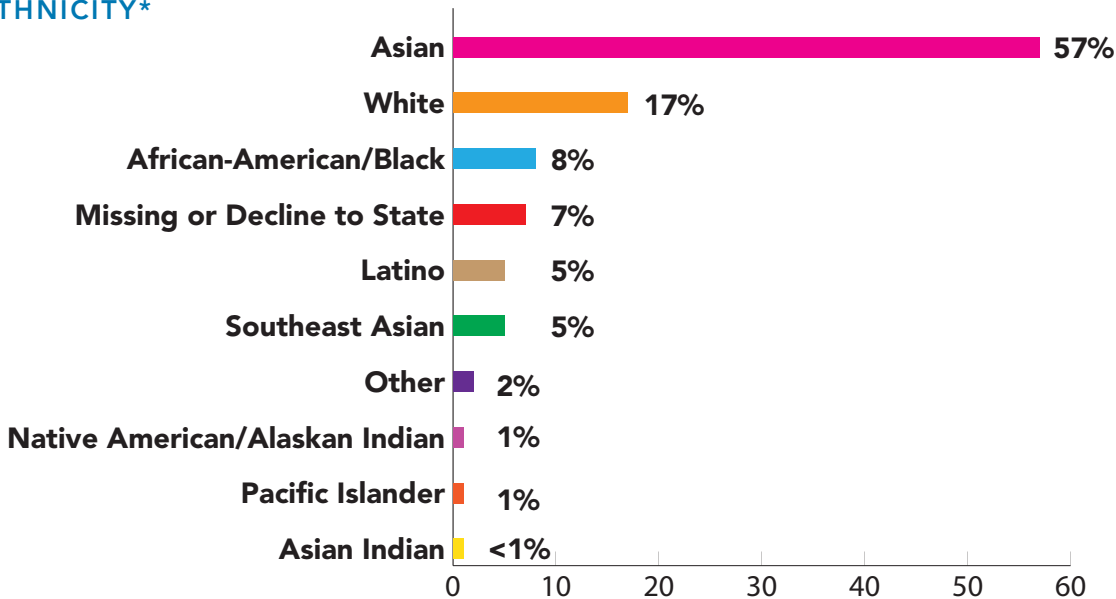
“It’s about more than food,” she says. “It’s about finding a place where you can thrive.”

COMMUNITY NUTRITION PROGRAM

Through our Community Nutrition Program, older adults (60+ years) and adults living with disabilities (18-59 years) enjoy warm, nutritious meals at community centers located across San Francisco. *The Community Nutrition Program served nearly 367,000 meals to our clients this year.*



ETHNICITY*



*Note: Ethnicities reflected may add up to more than 100% because of multi-racial respondents.



366,402
meals served

10,660
clients served

1,143
adults with disabilities
served (ages 18-59)

68%
live at or
below the
poverty line
(21% declined
to state)

9,517
older adults
served (age
60+)



12
locations

VOLUNTEER IMPACT

OUR VOLUNTEERS PROVIDE INVALUABLE SUPPORT

Volunteers are the heart of Project Open Hand, contributing over \$1.5 million worth of time this year across our kitchens, warehouses, meal sites, and more. *When we were founded in 1985, we were a volunteer-only organization. Today, we continue to thrive thanks to their unwavering support.*

1

5,228 dedicated volunteers supported Project Open Hand in FY 2024

2

Volunteers completed 10,158 shifts throughout multiple departments

3

Collectively, volunteers contributed 37,952 service hours

4

The estimated value of total volunteer support was \$1.5 M

AT A GLANCE

5,228

Total Volunteers

37,952

Total Volunteer Hours

10,158

Total Volunteer Shifts

240

Total Groups

966

Individual Volunteers

395,751

Meals Prepared and Packaged by Volunteers

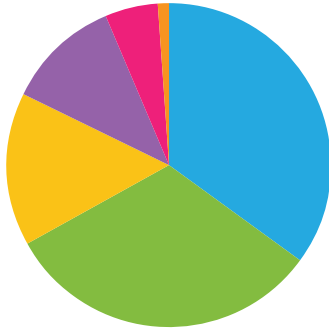
318,406

Meals Served to Older Adults by Volunteers

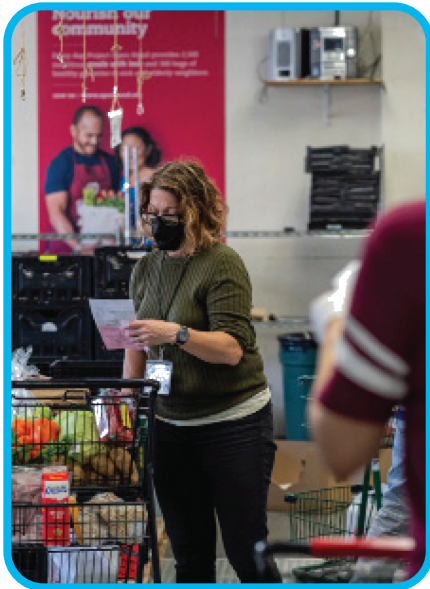
\$1.5 M

Estimated Value of Volunteer Time

WHERE DO OUR VOLUNTEERS WORK?



- 34% Kitchen
- 31% Warehouse
- 16% Grocery Center
- 11% Meal Sites
- 5% Special Events and Administration
- 3% Meal Delivery



VOLUNTEER SATISFACTION

99%

of volunteers agree that our staff and their fellow volunteers foster a safe and welcoming environment

90%

of our volunteers feel valued

95%

of volunteers would recommend Project Open Hand to people they know

EVENTS



REAF PRESENTS HELP IS ON THE WAY XXVII

The Richmond/Ermet AID Foundation (REAF) hosted their annual show, Help is on the Way, and partnered with Project Open Hand to help us provide medically tailored meals to the community. Volunteers and attendees enjoyed performances from the Broadway Touring Cast of Mrs. Doubtfire and more.



HAND TO HAND

This year's annual Hand to Hand Gala drew a large crowd of supporters! Gathered at the Hibernia Bank, attendees celebrated Project Open Hand, bid on silent and live auction items, and enjoyed musical performances by local artists.



BRUCE SPRINGSTEEN & THE E STREET BAND

Project Open Hand was selected as the featured nonprofit partner for Bruce Springsteen's San Francisco concerts! At each concert, Bruce picks a hunger-focused nonprofit to support and encourage concertgoers to donate to them. After a callout on stage by The Boss himself, Project Open Hand team members collected donations from the audience.



PRIDE MONTH KICKOFF AT THE EAGLE

Project Open Hand kicked off Pride month with a Beer Bust at SF Eagle Bar. The event, featuring unlimited beer, delicious food, homemade Jell-O shots, raffle prizes, and words from CEO Paul Hepfer and Senator Scott Wiener, made for a fun way to celebrate with the community.

GUSNIP: ACCESS TO FRESH, LOCAL PRODUCE

From May 2023 to September 2024, Project Open Hand used grant funds from USDA's Gus Schumacher Nutrition Incentive Program (GusNIP) to purchase high-quality, regionally sourced, and culturally relevant produce. This enhanced our medically tailored grocery service for over 3,900 clients and their families across San Francisco, Alameda, and Contra Costa counties.



SURVEY RESULTS SUGGEST IMPROVEMENTS IN FOOD SECURITY, CONFIDENCE, AND INTAKE


In partnership with six UCSF clinics, we enrolled 86 clients who completed surveys about their experience. Among those who completed at least twelve weeks of programming:


- **81% increased nutrition knowledge** to address their health condition
- **88% felt more confident** in the ability to eat fruit and vegetables on a budget
- **92% expanded the variety of produce** consumed

Through GusNIP, we increased investment in local producers:

 **\$250K**
of local produce distributed

 **79%**
organically grown

 **80%**
of produce sourced within 250 miles

 **80%**
from BIPOC-led farms

What's Next? We built new partnerships with local aggregators like Permanent Agriculture and began integrating local, pre-cut produce into frozen meals. While the grant funds have since ended, Project Open Hand continues to seek funding to expand local sourcing to other food categories and plans to launch a Community Food Council in Fall of 2025 to guide future menu development.

FINANCIAL STATEMENT

STATEMENTS OF FINANCIAL POSITION AS OF JUNE 30, 2024

	JUNE 2023	JUNE 2024
Total Assets	\$ 13,033,839	\$ 13,468,159
Total Liabilities	\$ 2,120,869	\$ 2,264,706
TOTAL NET ASSETS	\$ 10,912,970	\$ 11,203,453

STATEMENTS OF ACTIVITIES AND CHANGES IN NET ASSETS AS OF JUNE 30, 2024

SUPPORT AND REVENUES FROM OPERATIONS	JUNE 2023	JUNE 2024
Program service fees	\$ 4,246,489	\$ 3,015,757
Government grants	\$ 6,973,122	\$ 7,201,759
Individual donations	\$ 2,623,927	\$ 2,460,391
Foundation grants and contributions	\$ 1,933,689	\$ 1,029,359
Bequests	\$ 644,573	\$ 1,409,303
Fundraising events	\$ 378,064	\$ 378,509
Fiscal sponsor revenue	\$ 238,755	\$ 0
Business and corporate donations	\$ 459,200	\$ 318,225

**STATEMENTS OF ACTIVITIES AND CHANGES IN NET ASSETS AS OF JUNE 30, 2024
(CONT.)**

SUPPORT AND REVENUES FROM OPERATIONS (CONT.)	JUNE 2023	JUNE 2024
In-kind donations	\$ 806,471	\$ 1,098,384
TOTAL SUPPORT AND REVENUE	\$ 18,304,290	\$ 16,911,687

OPERATING EXPENSES: PROGRAM SERVICES	JUNE 2023	JUNE 2024
San Francisco		
HIV Meal Delivery	\$ 2,102,872	\$ 2,654,825
HIV Grocery Services	\$ 502,834	\$ 670,768
HCI Meal Delivery	\$ 1,300,013	\$ 1,452,281
HCI Grocery Services	\$ 472,776	\$ 686,314
Senior Meals	\$ 9,679,468	\$ 7,987,269
East Bay:		
HIV Meal Delivery	\$ 643,728	\$ 659,806
HIV Grocery Services	\$ 339,512	\$ 319,011
HCI Meal Delivery	\$ 580,141	\$ 1,109,525
HCI Grocery Services	\$ 157,280	\$ 347,083
TOTAL PROGRAM SERVICES	\$ 15,778,624	\$ 15,886,882

**STATEMENTS OF ACTIVITIES AND CHANGES IN NET ASSETS AS OF JUNE 30, 2024
(CONT.)**

OPERATING EXPENSES: SUPPORTING SERVICES	JUNE 2023	JUNE 2024
Management and general	\$ 887,373	\$ 845,937
Development	\$ 1,634,529	\$ 1,518,924
TOTAL SUPPORTING SERVICES	\$ 2,521,902	\$ 2,364,861
TOTAL OPERATING EXPENSES	\$ 18,300,526	\$ 18,251,743

OTHER INCOME (EXPENSES)	TOTALS
Rental income	\$ 963,552
Miscellaneous income (Expense)	\$5,167
Investment income	\$ 661,820
CHANGES IN NET ASSETS	\$ 290,483

THANK YOU TO OUR DONORS

DIAMOND PLATE CLUB \$100,000+

Estate of Helen M. Embree
Gilead Sciences, Inc.
John and Marcia Goldman
Philanthropic Fund
Hellman Foundation
Estate of Dorrit Kay
Estate of Paige Shepard
Estate of James A. Welter

PLATINUM PLATE CLUB \$50,000—\$99,999

Archstone Foundation
Bayer Fund
Lillian Lincoln Foundation
San Francisco Soda Tax

GOLD PLATE CLUB \$25,000—\$49,999

Anonymous (2)
John Anthony Anzalone
Self-Trusted Revocable Living Trust
Estate of Jon Borset
Broadway Cares/Equity Fights AIDS
M H Buckeye Fund

Sharon L Davidson Trust
Delta Dental Community Care Foundation
Robert and Dana Emery Family Foundation
Carol and Joe Grundfest Gryphon Investors
Terri Hersh
Hellmann Family Fund
Middle Passage Foundation
Redwood Credit Union
Richmond/Ermet Aid Foundation
San Francisco 49ers Foundation
George H. Sandy Foundation
Elizabeth Velarde*
Waymo
Zillow

SILVER PLATE CLUB \$10,000—\$24,999

Anonymous (4)
Alameda County Community Food Bank
BlackRock
Jeanne S. Cain Trust
Frank A. Campini Foundation
Elizabeth Cartwright and Alan Casserly
Community Thrift Store

Connie Ellerbach Charitable Fund
Lisa Erdos and Wayne DeJong
John & Marcia Goldman Foundation
Gurmehar Foundation
Colleen and Robert D Haas Fund
The Hartevelde Foundation
Frances Hellman and Warren Breslau Fund
Cynthia Hersey
Mr. and Mrs. Harold Isbell
David H. & Barbara M. Jacobs Foundation
Estate of Sylvester James
Jonathan Jump and Hal Marz
Kaiser Permanente
Estate of David R. Kessler
KHP Capital Partners LP
Daniel Killar
Nicole Lederer and Lawrence Orr
Estate of Bruce Leitstein
MAC VIVA GLAM Fund
Maidenherren Fund
Mission Analytics Group, Inc.
Caroline Mitchel and Mark Chesebro
Estate of Jane Musser

Estate of Virginia Olesen
Mary and Michael Osborn
Nellie Prescott Trust
San Francisco Health Plan
The Scarlet Feather Fund
StopWaste
Sutter Health CPMC
Tito's Handmade Vodka
Estate of David S. Weinstein

BRONZE PLATE CLUB \$5,000—\$9,999

Anthem Blue Cross Foundation
Anonymous (7)
Alameda Alliance for Health
Kelly and Carrie Barlow
Robert Burnside*
Maria Cardamone and Gordon Matthews
Andrew Chang and Danni Xie*
Theresa and Eric Chang
Charles Schwab Foundation
Chef's Lounge L.L.C.
Karl Christiansen*
Commercial Energy
The Eucalyptus Foundation
Exelixis

Paul Feuerwerker	Wilda and Lowell	James Scott Bays	Irene Heller	Benjamin
George Fisher	Northrop, III	Eileen Bewley	Michael Henry	Newsom
Penny and Sean	PAV Foundation	Estate of Dorothy	and Tyler	Patrick O'Connor
Fottrell	Anne and Martin	Jean Bobbitt	Wuthmann	Jennifer and
William Giammona	Roher	Stephanie	Paul Hepfer	Robert Petraglia*
and Dennis	Jennifer Drimmer	Boudreau	Susanna Holt	PwC
Lickteig	Rokovich	Robert and Susie	Jenson Family	Stephen Rico
David Giltinan	The Abe &	Buckley	Charitable Fund	Carol Seiler
Linda Glick*	Kathryn Selsky	Steve Chan	Elizabeth and	Roberts
Gray Grodzicki	Foundation	Dr. and Mrs.	Thomas Jones III	Marcia Rodgers
Robert Grossman	Veronique and	Melvin Cheitlin	Jane Kaplan and	Judith Rosenberg
Margaret E. Haas	Peter Siggins	Barbara and	Donatello Bonato	and Alan Fried
Family Fund	The Talbott Family	Martin Cohen	Stephanie	Eli & Mae Rosen
Hilltop	Foundation	George L. Crow	Bonham and	Foundation
Foundation	Peter S. Tannen	Carolyn and	Susan Kennedy	Tachina Rudman-
The Humanist	and David C.	Gordon Davidson	Kristofer	Young and Peter
Fund	Strachan	Thomas de Rose	Konietzko and	Young
Nicholas and	Lynn Tolin	and Karl Sopke	Peter Borkon	Jenny Sears
Angela Kalayjian	Aditya Wakankar	Marie and Peter	The Michael	Renee and Philip
Fund	Duane Wakeham	Dorsey	Kossman	Seay
Martha Angove	and Richard	Gail Eisleman	Charitable Gift	Estate of Philip
and Carl	Sutherland	Amy Eskin and	Fund	Alan Siebert
Kaufman	Jason Wei	Mitchell	Lauderdale-	Neal Siler
Estate of Marilea	Gina Wellmaker	Shapson*	Zuspan Giving	Charles Silverman
Larm	Ellie Wood	The Eric and	Fund	Jerri Brown
Gary Loeb	The Charles &	Sonali Fain	Louis and Sally	and Tracy
Houlihan Lokey	Jane Zaloudek	Charitable Fund	Lewis	Steelhammer
Richard Long	Charitable Trust	Elizabeth	Marie and Barry	The Stoper Family
Losito Family	Zing - Wellness	Ferguson	Lipman	Charitable Fund
Charitable Fund	Wednesday	David J. Fix*	Maxwell/	Anita and Edward
Charles Lowey	Community	Sandra Flaviani	Hanrahan	Tortorici
Ball		John Garfinkle	Foundation	Janet Weiss and
Dr. Preston Maring		Charitable Fund	Richard McAllister	David Wilson
ML Family		John Glass*	and Marie	The Spinella
Charitable Fund		Nicola and Gary	Crinnion	Welch Family
Sally Morton		Gordon	John and Sandra	Charitable Fund
Estate of Thomas		Robert Graves	McGonigle Donor	Robert Weston*
and Glenda		Marian and Roger	Advised Fund	The Stephen P.
Murray		Gray	Angelo Meola	White Charitable
MyVest		Nancy Hayes	Anthony and	Fund
Niyogi Family		William and	Catherine	Wilson, Sonsini,
Fund		Barbara R. Hazen	Mirante	Goodrich and

**CRYSTAL
PLATE CLUB**
**\$2,500—
\$4,999**

Suzanne R.
Amster
Anonymous (6)
Julie and Tom
Atwood

Rosati
Foundation
Sally and Bryan
Woods
Ruth A. Yankoupe
Fund

CHINA PLATE CLUB

**\$1,000—
\$2,499**

Barbara Abate
Sharon Ahern
Susan Aizumi
Algolia Inc.
Catherine and
Patrick Allen*
Arielle Anderson
Richard and
Carlene
Anderson
Shabbir & Ashrafa
Anik Charitable
Fund
Anonymous (16)
K. Arakelian
Foundation
Karin Ashley and
Daniel Roth
Peg Atherton
Ursula and S.
Leonard
Aurebach
AvalonBay
Communities,
Inc.
Robert and
Catherine Aveson
Baker & Commons
Eric Barkan
Scherrie Barone*

James Bartlett and
Theodore Hax
Daniel Wehmeier
and Marian
Beard Fund
Gerald Becerra
Les Behrens
Chad Belicena*
Marjorie and Milo
Bell*
Jeremy Bergtholdt*
Robert Bernheim
Mark Bertelsen
Nirav Bhakta
Mabel and Jeffrey
Bialik*
Sandra Bitler
Brian Bliss*
Susan Blomberg*
Evan Bloom
Blue Skies Giving
Fund
Mary Ann and
Jerry Boddum
Anne Bolla
Kathleen Brannan
and Michael
Borck Family
Foundation
Nancy Boughey
James Bowler
Giving Fund
Jane Brady*
Sheila Brady
Ida Braun
Yvette Assia-
Breslauer and
George Breslauer
Barbara and David
Bunker
Claire Bunton and
Steve Elprin

Rita Burgess and
David Readerman
John Callahan
Christopher and
Liv Turid Cann
Carlson Aki
Family Fund
Mary and Michael
Carp
Denis Carrade
Tiia Carswell
Judy Castaillac
Penny and Bruce
Castleman*
Michael Castro
and Sharin Blair-
Castro
Paula Champagne
Helen L. Chen
Susan and Ronald
Choy
Craig Chu and
Christina Lee
Sheryl Citta
Anita Clemetson
Marsha Cohen
and Robert Feyer
Paul Colfer
Kenneth Prag
Patricia Colton
Marsha Condon
Kathryn Conway
Jason Conyard and
Fernando
Aguayo-Garci
Adam Coppoletti*
Alberto Cortes
Dorene Cotter and
Anthony Nash
Betsy Cotton*
Linda Walsh and
Keith Cowan

Steve Crabiell and
Donald Andreini*
Robert Craig
Marilyn and Dale
Crandall*
Sharon and Dale
Crandall
David and James
Harbison Crook
Margaret Curran
and Josh Sale
Marya D'Abate
Gretta and Rodney
D'Acquisto
Ellen Daniell and
David Gelfand
Susan Daniloff
Gwen Davis Toso
Fund
Margaret Davis
Syvenia Davis
Janeann Dawson
Serge and Monika
De La Porte
Jacqueline Desoer
Cloann DiGrazia
Jon Doellstedt*
Kathryn Doyle
and Alex
Alexander
Duggleby Family
Fund
John Dwyer
The East Creek
Fund
John Eastly and
Stacy Nii-Eastly
James and Gay
Echeverria
Estate of Lynne
Eggers
Martha Ehrenfeld

Howard
Eisenstark
The Lisa Ells and
Brett Kingsbury
Fund
Mark and Julene
English*
Susie M. Eng
John Fandel
Carol and Howard
Fine
Maureen Flaherty,
MD
Doris Flamm
Samuel and Juliet
Fleischmann
Joyce Freedman
Robert Frey
Jeffrey Friant
Justin Frieders
Loretta and
Andrew Fu
Lynn Garney*
Patricia and Alfred
Gavello
Ginaven Family
Charitable Gift
Fund
Nadine Ginzberg
Emily and Sam
Glick
Barbara and Alan
Goldenberg
Walter and Karla
Goldschmidt
Foundation
Richard Golfin
The Good
Neighbors Family
Trust
Elizabeth Gordon
Janet R. Graham

Giving Fund	Hubbell	Kipper Charitable	Lucheta	and Gregory
Jeanne Gulner and	Charitable Fund	Fund	Ann Ludwig	Terry
Kenneth Rees*	Hulisch/	The Kittredge	Jennifer Lutz*	Paul Mugnier*
Robert Guter and	Flechtheim Fund	Fund	The Niall and Eve	V. Ramana Murty
Garrick Ohlsson	Daniel and Debra	David Klein	Lynch Fund	Thuan Nguyen
Kathy and James	Hunter	Tong and Brian	David Lyon	Raul and Cathy
Guthrie	Stella and Shu	Kobilka	Brigid Makes	Nicho
John and	Huo	Thomas Kocon	Lena Malik	John and Brenda
Katherine	Monica Incerti	Daniel Kohanski	Arsenio Mandilag	Nielsen
Halliday	Barbara Jackel	Angela and Eric	John Manley	Laura O'Brien
Michael Hall	Bruce Jackson	Korpela	Dr. Judith Margulis	William Ohtola
Heather Hanly	Jackalope	Claire Kramsch	and Jeffrey	Roger Ladwig
and Dan Purcell*	Randa Jacobs	Kurt Krebs	Kessler	Kathleen
Todd and Amy	Janet and Robert	John Kronenberg*	Peter Marko	O'Sullivan and S.
Hansen	Johnson	K. H. Wm. &	Dennis Markus	Maurice Krumrey
Charitable Fund	Ola Johnson	Andrea	Beverly Marlow	Prithviaraj Pal
Barbara Harms	Irene Jones	Manson Krueger	David Marten and	Parche
David and Mia	Just Wish	Foundation	Jordan Cuyler	Ann and Michael
Hartley	Foundation, Inc	Arleen Kwan	Eche and Ezequiel	Parker
Hayashi Family	Lonnie Justice	Ann La Borde and	Martinez	Kathryn Parnes*
Charitable Fund	Rob Kahn	Chester Simpson*	Lisa and Charles	Ashish Patel
Kim Kayashi	Kaiser Foundation	Sophie and	McManis*	Eleanor and
Monica and	Health Plan	Phurpa Ladenla	McCalmont	Jeffrey Patterson*
Stanley Hayes	Ruth and Don	Barbara LaPlante	Family Charitable	Jill Pearlstein
Heffernan	Kamprath	Diane Lee	Fund	Louise Pescetta
Foundation	The Kaplan	Charitable Fund	The Marshall Kirk	Alan Pex*
David Hershberger	Family	Roberta Lee	McKusick and	Randall Presuhn
Elaine Herzig	Susan and Barry	Dr. Lewis Lehman	Eric P. Allman	and Timothy
William Hicks	Karl	Jeff Leider	Foundation	Nguyen
John Holme and	Jeffrey N. and	Zahavah Levine	McLeod Family	Prince Charitable
Margit Birge	Anne Marie Katz	and Jeff Meyer	Gift Account	Trusts
Holmes US	Charitable Fund	Mark Levison	McNabb	Laurel and Gerald
Anton Honikman	David Kaye*	David Lindsey	Foundation	Przybylski*
and Jessica Lindl	David and Anita	Ramey Littell	Gail Yee and	Phillip P. Ramsey
Sharon and Mark	Keller	William Lockard	Robert Meave*	Weslie Rau and
Hood*	Barbara and John	and Alix Marduel	David Mellor	Dennis Snapp
Marcia Hooper*	Kenny*	Patricia Lockett	Melinda Meyers*	Dhyan Raufa*
Frank Horst	Minsun Kevers	David Lofting	Janine and Jon	David Richardson
Patricia and	Bernadette Kim	Patricia London	Miller	Nanilee and Kirk
Randall Horton	James King	Steven Lovell and	Ms. Beatriz	Robarge*
Ivy Hsieh	Evangel King	Dara Youngdale	Molinar*	Dr. Charles Roth*
James and Nadine	Philip and Sally	Paul and Sharon	Janet Morimoto	Christine and

James Russell
The Robert S.
Russell
Charitable Giving
Fund
San Francisco
Eagle Bar
Barbara Sanders
The Ronald
Philip Saturno
Foundation
Tricia
Schexnaydre*
Suzanne
Schneider and
Dov Herbstman
Schoenberger
Family Charitable
Fund
James and Lucia
Schultz
Nancy Scott-Ince
and William Ince
Sara Scott
Roberta and Reed
Severson*
Sing for America
Foundation
Uma Sinha
David Slattengren
Jordan Smith
Smuin
Contemporary
Ballet
Social-Bound
Global
Solomon Family
Foundation
The Starbucks
Foundation
Fern and Alan
Steinbach

The Stewart
and Montecalvo
Charitable Fund
Dianne Stewart
and Andrea
Shepard
William Sturm
Alice Phelan
Sullivan
Corporation
Kim Summers-
Silva and Russell
Silva
Stuart J. Sweetser
and Robert S.
Carroll*
Kim Syre
Tarbell Family
Charitable Fund
Thatcher/Spencer
Gift Fund
Thompson Dolloff
Charitable Account
Roger Tong and
Linda Safarik-
Tong Charitable
Fund
Jeffery Trescott
Sheldon Trimble
Tyle/Westley
Charitable
Account
Lisa Vandenberg
Donald Viegas and
Daniel Johnson
Hong Thai Family
Kelley Wagg*
Rosemary
Wakeham
Ryan and Deanna
Wall
Jennie Watson

and Paul
Lucchesi
Lesley Weaver
Margaret and
Bruce Wetter
Nancy Wiesbrook*
Annette Wild
Peter Wiley
Scott Willoughby*
Mrs. Alfred Wilsey
Marjorie Winkler
and Paul
Hohenschuh
Kellen Wittman
Judith Wolfe
Durwin Wong
Mary Woodman
Alberta Woods
Katharine Yeager
Philip Yee
YEI Engineers, Inc.
Sharron Zakus
Goran Zaneti
Howard Zee
Zelnik Family Giving
Fund

**Indicates Supper Club
Member*

BOARD OF DIRECTORS

FOUNDER

Ruth Brinker

BOARD CHAIR

Karl Christiansen,
Wells Fargo

VICE BOARD CHAIR

Arielle Anderson,
Teladoc Health

FINANCE CHAIR

Richard Long,
Cerity Partners

SECRETARY

Susanna Holt,
Autodesk

BOARD MEMBERS

Vishwa Chandra,
DoorDash

Andrea Wilkinson,
UCB

Mike Henry,
Google

Theresa Ng Chang,
Splunk

Preston Maring, M.D.

Jason Wei,
Meta

Andrew Chang,
Premji Invest



EXECUTIVE TEAM

Paul Hepfer, Chief Executive Officer

Ana Ayala, VP of Programs

Herbert Dong, Chief Operating Officer and Chief Financial Officer

Alberto Cortés, VP of Fund Development and Community Affairs

Katie Jackson, MS, RD Chief Nutrition Officer

Onome Okulolo, VP of People and Culture



Project Open Hand

meals with love

FOLLOW US ON SOCIAL MEDIA:

@Projectopenhand



SAN FRANCISCO

730 Polk Street
San Francisco, CA 94109
(415) 447-2300

OAKLAND

1921 San Pablo Avenue
Oakland, CA 94612
(510) 622-0221

www.openhand.org